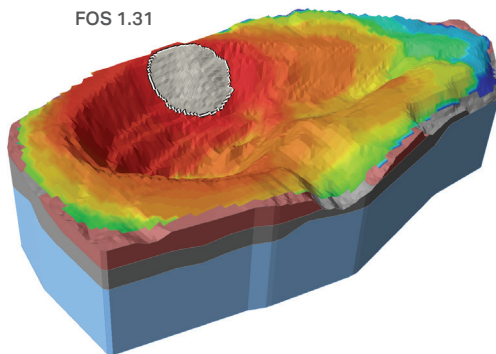


Slide3

3D Limit Equilibrium Analysis of Slope Stability



Model complex 3D geometry like open pit mines

What is Slide3?

Slide3 is a tool that allows geotechnical engineers to calculate the factor of safety of complex geometries that 2D models cannot fully simulate. Model advanced geometries like landslides, MSE walls, slopes supported by soil nails, and more.

With Slide3, users can calculate failures in any direction without the need to define the direction in advance, increasing efficiency in modeling and analysis.

With its advanced parallel processing, Slide3 can also compute large models in a very short time.

What's New in Slide3

Geometry Repair Tool

- This tool has been added to the Import Geometry process and enables users to fix defects in imported geometry directly in Slide3, negating the need to use external third-party repair software.

Collapse Small Volumes

- A new Collapse Small Volumes function has been added to allow users to identify and collapse small volumes in the geometry.

Fully Integrated Multi-Section Analysis with Slide2

- The addition of a new Section tool enables 2D analysis of multiple planar sections of a 3D model via a single automated process. Slices are packaged into a single file and the Slide2 computing engine is automatically invoked to perform a 2D analysis. Results are re-read back into Slide3, and the global minimum surfaces and factors of safety are displayed in 3D.

New Wedge Shape Slip Surface

- A new slip surface type has been added to enable searching for wedge-shaped failure surfaces using the Cuckoo or Particle Swarm search method. This option enables the handling of a range of block-shape slip surfaces that previous versions couldn't address using the simple Multi-Surface type.

Integrated Radar Sensor Deformation Monitoring Data

- Users can now import deformation monitoring data obtained from a radar scan of their site to overlay radar map data on modeling results in Slide3. This integration enables advanced calibration and refinement of model input parameters, resulting in higher reliability from the program's numerical models.

Find more details: rocscience.com/software/slide3

Plans & Pricing

Personal License: Locked to one computer.

- Lease: **USD \$5,295/year**
Leased annually. Includes Maintenance+.
- Perpetual: **USD \$10,595**
Purchased outright. Includes 12 months of Maintenance+.

Flexible License: Installed on any number of machines. The license file sits on the server.

- Lease: **USD \$7,795/year**
Leased annually. Includes Maintenance+.
- Perpetual: **USD \$15,495**
Purchased outright. Includes 12 months of Maintenance+.

Maintenance+

Maintenance+ is our enhanced maintenance and support services subscription, purchased annually at 20% of the license cost.

With Maintenance+ Continuous Software you get access to all feature releases, enhancements, and bug fixes throughout the year and as soon as they're available. You also have access to convenient License Services, the support of our experts, and exclusive learning offerings.

Contact us at software@rocscience.com

3D Slip Surface Shapes

- Spherical
- Ellipsoidal
- Spline surface
- Composite

Advanced Features

- Excess Pore Pressure
- Rapid Drawdown Analysis
- Unsaturated Shear Strength
- Anisotropic Regions
- Tension Cracks

Analysis Methods

- Bishop
- Janbu
- Spencer
- GLE with intercolumn force function

Computation

- Very fast compute engine
- Metric or imperial units

Data Interpretation

- View 3D global minimum slip surface
- View all slip surfaces
- View contour plots of analysis data on slip surface (e.g. stress, strength, pore pressure)
- View safety maps on the surface of the model or on cutting plane through your model
- Show support forces
- Data tips for any object
- Annotation and dimensioning tool kit
- Export to Excel
- Export image files

Loading

- Point loads
- Distributed loads (uniform or variable)
- Seismic loads

Modeling

- Create 3D models with CAD tools
- Import 3D surfaces with .dxf, .dwg, .obj, .stl, .step, .iges, .tin, .asc, .xyz files
- Borehole data entry
- Construct geometry profile from borehole data
- .dxf import/export
- One-click material assignment
- Import RS3 files
- Import 2D to 3D (Slide2 or RS2)
- Export 2D planar section (Slide2 or RS2)
- Right-click editing shortcuts
- Interactive sidebar
- Slope wizard (create simple slope models with a few mouse clicks)

Pore Pressure Definition

- Water surfaces (water table or piezo line)
- Water pressure grids
- Ru coefficients
- Import pore pressure grids from RS3

Search Methods

- Auto-refine search
- Cuckoo search
- Grid search
- Particle Swarm
- Surface Altering Optimization
- Automatic 3D failure direction determination
- Slope limits (inclusion or exclusion zones)
- Surface filter options

Seismic Options

- Pseudo-static analysis
- Staged pseudo-static analysis

Strength Models

- Mohr-Coulomb
- Undrained
- Infinite Strength
- Anisotropic Strength
- Shear/Normal Function
- C/Phi Function
- Generalized Hoek-Brown
- Vertical Stress Ratio
- Barton-Bandis
- Power Curve
- Hyperbolic
- Discrete Function
- Drained-Undrained
- Generalized Anisotropic
- SHANSEP

Support

- Active vs. passive anchors
- Easily define/edit patterns
- End-anchored bolts
- Geotextiles
- Grouted tieback
- Grouted tieback with friction
- Piles and micropiles
- Soil nails
- User-defined